

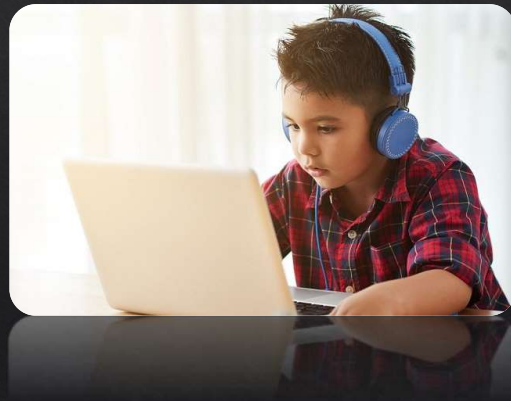
Speech Teletherapy

CoxHealth

Teletherapy

What is Teletherapy?

Teletherapy is the use of technology for the delivery of therapy at a distance by linking a provider to a patient for evaluation, treatment, and/or consultation.



Timeline for Teletherapy at CoxHealth

Fall 2016

Trials with speech teletherapy

Fall 2018

First contracted school district utilizing speech teletherapy
– *Forsyth, MO*

Fall 2019

Contracted additional school districts for speech teletherapy
– *Forsyth, MO; Fair Grove, MO; Mt. Vernon, MO*

Spring 2020

Launch of Direct to Consumer teletherapy (PT, OT, Speech)

Fall 2020

Continued expansion in school districts for speech teletherapy
– *Forsyth, MO; Mt. Vernon, MO; Neosho, MO*



School-Based Teletherapy Needs

- ✓ Generation of treatment schedule
- ✓ Planning & Providing Speech Therapy Services
- ✓ Individual & Group Treatments
- ✓ Documentation utilizing SpedTrack
- ✓ IEP Case Management & collaboration for Related Services
- ✓ Completion of Quarterly Progress
- ✓ Completion of Initial evaluations & Re-evaluations
- ✓ Participation in IEP meetings
- ✓ Collaboration with Faculty, Staff, and Family members
- ✓ Medicaid Billing through Therapy Log
- ✓ Virtual Therapy in School Setting or at Home



Technology

There are a variety of virtual platforms that can be utilized for teletherapy.



VidyoConnect™ is a unified user experience across mobile, desktop and conference room endpoints, VidyoConnect delivers the consistency, ease-of-use and rich features that drive adoption.



Microsoft 365 is designed for large organizations, but it can also be used for medium-sized and small businesses that need the most advanced security and productivity capabilities.

Technology



Google Classroom is a free web service developed by Google for schools that aims to simplify creating, distributing, and grading assignments. The primary purpose of Google Classroom is to streamline the process of sharing files between teachers and students.



Zoom has an easy, reliable cloud platform for video and audio conferencing, chat, and webinars across mobile, desktop, and room systems.

Equipment



Desktop Computer



Laptop



Tablet or iPad



Camera



Headset

School Assigned Facilitator

Each school is asked to provide a staff member to assist with onsite supervision of students. The facilitator's main purpose is to ensure appropriate sign on to therapy and provide any hands-on assistance that may be needed in regards to managing behavioral concerns within sessions. The facilitator often has other roles within the school and may complete various tasks during teletherapy sessions.



How teletherapy works

- ◆ Speech Teletherapy works much like face-to-face therapy.
- ◆ The student will have an assigned time to therapy.
- ◆ When they arrive, they will be greeted by the onsite facilitator and obtain any worksheets (if needed).
- ◆ They will then interact with the speech pathologist for therapy drills and targeting of goals.
 - ◆ *This speech pathologist will function like an onsite speech pathologist in regards to management of therapy, IEP documentation, and communication.*

Voice of the Customer



"The Speech Teletherapy service that Cox has provided to our students has been incredibly valuable to our district."

"This school year, it would have been impossible for me to provide quality instruction to all of the speech and language students in our district due to the incredibly high number. Utilizing the services of CoxHealth has allowed me to focus on the students that I see weekly because I am confident that the students that are being seen via teletherapy are receiving quality instruction from the CoxHealth therapists."

"I am excited that our district has had the opportunity to participate in this service delivery model."

Allison Merrell, MS CCC-SLP
- Forsyth Schools

Contact Information



Brandi Clary, M.S. CCC-SLP
Telemedicine Coordinator
Brandi.Clary@coxhealth.com
417-730-6169

Kelly Beckham, M.A. CCC-SLP
Outpatient Therapy Manager
Kelly.Beckham@coxhealth.com
417-269-5522

