

Listening & Learning Session

Friday, April 24, 2020

Overview for Today's Session

- Introductions
 - Show-Me School-Based Health Alliance of Missouri
 - Today's attendees
- School-based health programs in the time of COVID-19
- Listening & learning discussion
 - Communication during COVID-19
- Resources
- Closing

Show-Me School-Based Health Alliance of MO

Mission: We support communities in building and sustaining quality school-based health programs.



Access to Resources & Best Practices

Peer-to-Peer Networking Across MO Programs



Target Audience

School districts, community stakeholders, and the healthcare providers that serve them.



Advocacy & Coalition Building

Technical Assistance



Data Collection & Evaluation

Training & Education



What is a School-Based Health Program?

A school-based health program is a shared commitment between a community's schools and health care organizations to support students' health, well-being, and academic success by providing preventative, early intervention, and treatment services where students are - **in school**.



National School-Based Health Alliance

Missouri SBH Program Type Definitions

THE BIG SIX

The Show-Me School-Based Health Alliance has expanded the types of school-based health programs to represent the six types of programs that exist in districts throughout Missouri.



① Comprehensive School-Based Health Center

Comprehensive School-Based Health Centers are a partnership between schools and community health organizations that deliver primary health care, behavioral/mental health care, oral care, and vision care coordinated by the center—even if they are delivered by different providers.

② School-Based Health Center

School-Based Health Center (SBHC) programs are partnerships between schools and community health organizations that deliver primary health care, at minimum, through a fixed site on a school campus.

③ School-Linked Health Care

School-Linked Health Care programs are linked with schools to coordinate and provide health care for students. Services are delivered off campus through a fixed site near the school.

④ School-Based Mental Health Program

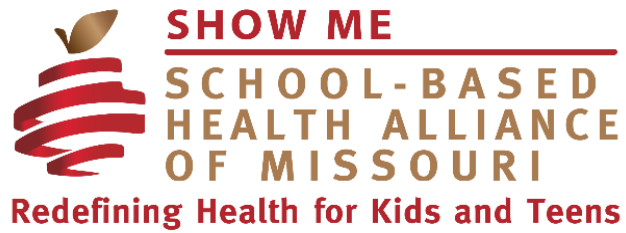
School-based mental health programs are partnerships similar to SBHCs but only provide behavioral/mental health.

⑤ Mobile Health Care

Mobile Health Care programs are without a fixed site that rotate a health care team through a number of schools, including mobile van/bus/clinic on wheels that parks on or near school property/campus.

⑥ Telehealth

Telehealth programs deliver 100% of school-based health care services using telemedicine technology.



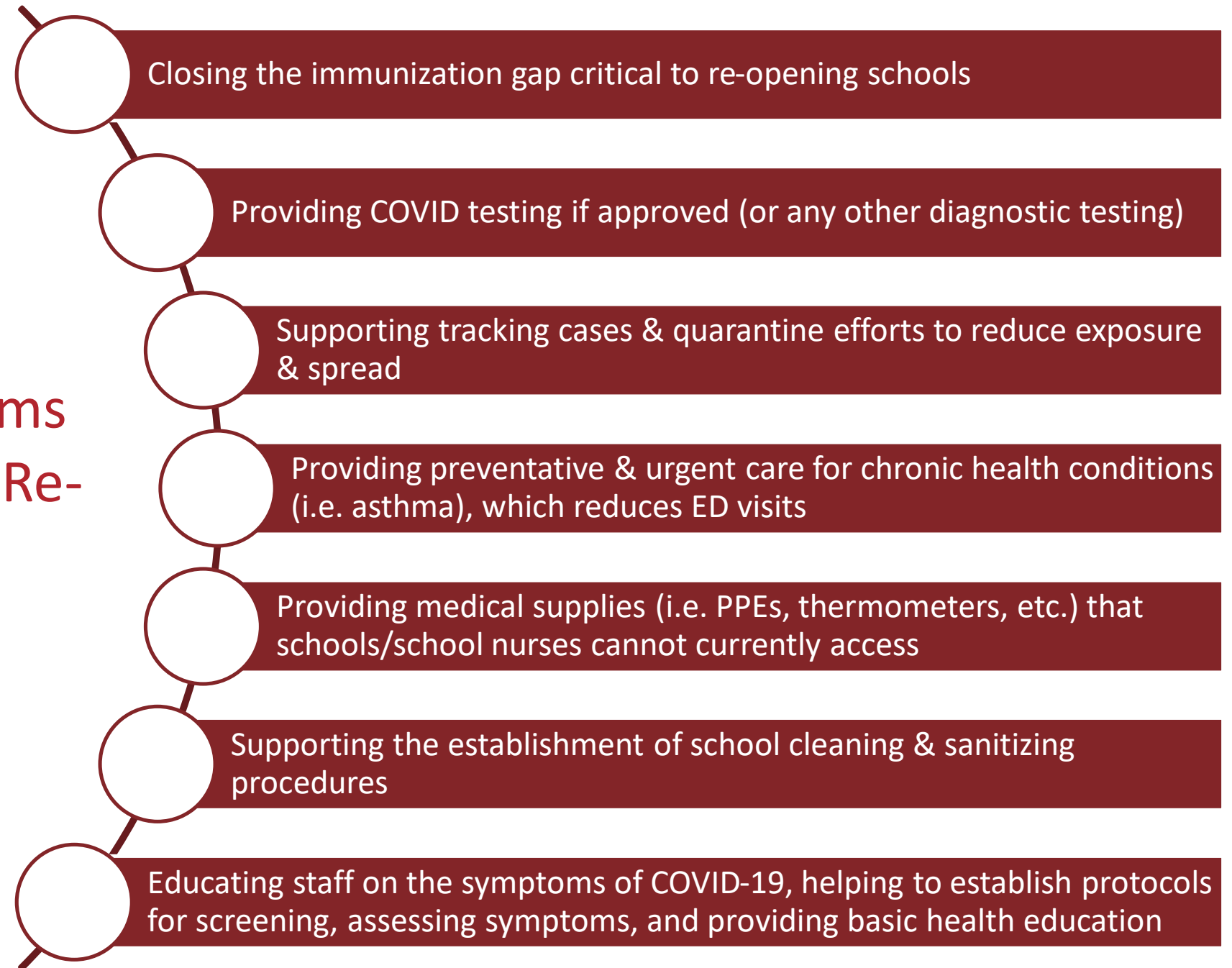
Organizations Represented Today

- | | | | |
|---------------------------------------|----------------------------------|--|-----------------------------------|
| Affinia | Missouri Ozarks Community Health | Nixa Schools | KCU |
| Cass County Dental Clinic | Ozarks Community Health Center | North Callaway R-1 | LevelUp Kids, Inc. |
| Central Ozarks Medical Center | Samuel U. Rodgers Health Center | North Kansas City Schools | Missouri Care |
| Children's Mercy Hospital | St. Louis Children's Hospital | Northwest R-1 | Missouri Foundation for Health |
| Clay County Public Health | The SPOT @ Jennings Senior High | Parkway School District | Missouri Primary Care Association |
| Complete Family Medicine | Affton School District | Richmond School District | MO DESE |
| Comtrea | Ferguson/Florissant | Riverview Gardens | MO DHSS |
| Family Health Center | Francis Howell | Rockwood School District | MO DHSS Office of Oral Health |
| Family Practice Clinic | Kansas City Public Schools | Salem School District | MO State Board of Nursing |
| FCC Behavioral Health | KIPP St. Louis Public Schools | Wentzville School District | MU Extension |
| HCC of Rural MO | Kirkville R-III | Wright City School District | Operation Food Search |
| Heartland Behavioral Health | Kirkwood School District | Center for Children Family and Workforce Development | UMKC SOD |
| iFM Community Medicine | Lee's Summit R-7 | Express Scripts | |
| Jordan Valley Community Health Center | | GlaxoSmithKline | |
| Katy Trail Community Health Center | | Health Forward Foundation | |

School-Based Health Programs During COVID-19

- National landscape of SBH programs
- Landscape of SBH programs in Missouri
- Role of SBH programs now & throughout school re-entry

Role of SBH Programs Throughout School Re- Entry



School-Based Health Programs During COVID-19

- National landscape of SBH programs
- Landscape of SBH programs in Missouri
- Role of SBH programs now & throughout school re-entry
- MOSBHA support
 - Federal & state advocacy efforts
 - Support for school district/community partnerships
 - Re-entry planning

Communication During COVID-19

- How is your organization communicating with staff? Partners? Students & families?
 - How is this going? What's working? What's not?
- What challenges are you facing and anticipate facing in communicating moving forward?

Communication Resources

- [Trauma-informed communication + Decision Making Guide for Schools + School Districts from Alive & Well](#)
- [Risk Communication Field Guide Questions & Key Messages from Association of State and Territorial Health Officials](#)
- [Talking with Children about Coronavirus Disease 2019 from Centers for Disease Control & Prevention](#)
- [Social and Emotional Learning Resources During COVID-19 from CASEL](#)
- [MOSBHA COVID-19 Resources](#)
- [Current Funding Opportunities](#)

Next Listening & Learning Session

Friday, May 8th

9:00 AM to 10:00 AM

Register at moschoolhealth.org/news-events

Complete our [evaluation of today's session](#) to inform future topics.

Upcoming MOSBHA Webinar

School-Based Health Program Teams: School Nurse & School-Based Health Provider Communication & Collaboration

Thursday, April 30

11:00 AM to 12:00 PM

Register at moschoolhealth.org/news-events

Resources

National School-Based Health Alliance

[w] www.sbh4all.org

Show-Me School-Based Health Alliance of MO

[w] www.moschoolhealth.org

[p] 800-807-8494

[e] info@MOschoolhealth.org

[s] @MOSchoolHealth

[Twitter](#) | [Facebook](#) | [LinkedIn](#)

SMSBHA Staff

Molly Ticknor, Executive Director

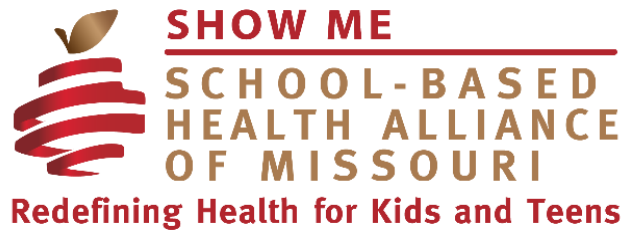
[e] mticknor@moschoolhealth.org

Molly Imming, Training & TA Manager

[e] mimming@moschoolhealth.org

Rachel Barth, Evaluation Coordinator

[e] rbarth@wustl.edu



Thank you to those whose financial and in-kind contributions support our efforts!



Interco Charitable Trust



a catalyst for change

Missouri Foundation for Health



MISSOURI SCHOOL BOARDS' ASSOCIATION

