

Listening & Learning Session:  
School & School-Based Health Program Re-Entry  
Friday, May 22, 2020

# Show-Me School-Based Health Alliance of MO

**Mission:** We support communities in building and sustaining quality school-based health programs.



**Access to Resources & Best Practices**

**Peer-to-Peer Networking Across MO Programs**



## Target Audience

School districts, community stakeholders, and the healthcare providers that serve them.



**Advocacy & Coalition Building**

**Technical Assistance**



**Data Collection & Evaluation**

**Training & Education**



# Missouri SBH Program Type Definitions

## THE BIG SIX

The Show-Me School-Based Health Alliance has expanded the types of school-based health programs to represent the six types of programs that exist in districts throughout Missouri.



### ① Comprehensive School-Based Health Center

Comprehensive School-Based Health Centers are a partnership between schools and community health organizations that deliver primary health care, behavioral/mental health care, oral care, and vision care coordinated by the center—even if they are delivered by different providers.

### ② School-Based Health Center

School-Based Health Center (SBHC) programs are partnerships between schools and community health organizations that deliver primary health care, at minimum, through a fixed site on a school campus.

### ③ School-Linked Health Care

School-Linked Health Care programs are linked with schools to coordinate and provide health care for students. Services are delivered off campus through a fixed site near the school.

### ④ School-Based Mental Health Program

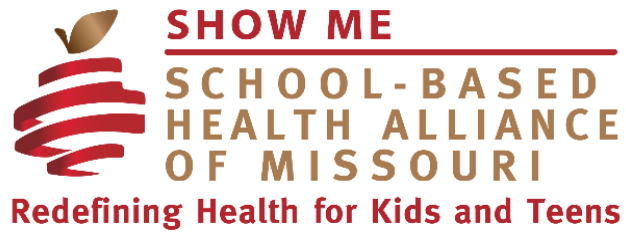
School-based mental health programs are partnerships similar to SBHCs but only provide behavioral/mental health.

### ⑤ Mobile Health Care

Mobile Health Care programs are without a fixed site that rotate a health care team through a number of schools, including mobile van/bus/clinic on wheels that parks on or near school property/campus.

### ⑥ Telehealth

Telehealth programs deliver 100% of school-based health care services using telemedicine technology.



# Welcome!

- |                               |                                 |                                       |                                    |
|-------------------------------|---------------------------------|---------------------------------------|------------------------------------|
| BJC Healthcare                | Samuel U. Rodgers Health Center | Lee's Summit R-7                      | Willow Springs R-IV                |
| Children's Mercy Hospital     | Synergy                         | Lewis County C-1                      | Cigna                              |
| Clarity Healthcare            | Dunklin School District         | Lift for Life Academy                 | Family Court of St. Louis County   |
| Complete Family Medicine      | Ewing Marion Kauffman School    | McDonald County R-1                   | GlaxoSmithKline                    |
| Comtrex                       | Festus School District          | Mexico Public Schools                 | KCU                                |
| Cox Health                    | Francis Howell School District  | Owensville High School                | Kansas City Health Department      |
| HCC of Rural Missouri         | Frontier Schools                | Raymore Peculiar                      | Lakin Consulting, LLC              |
| iFM Community Medicine        | Fulton Public Schools           | Richmond School                       | LevelUP Kids, Inc.                 |
| PATCH Center                  | Green City R-1 School           | Ritenour School District              | Jewish Family Services             |
| Preferred Family Healthcare   | Hazelwood School District       | Riverview Gardens                     | Missouri Care Health Plan          |
| ReDiscover                    | Hollister School District       | Rockwood School District              | Missouri Foundation for Health     |
| Affton School District        | Jennings School District        | Rolla Public Schools                  | Missouri Primary Care Association  |
| Belton School District        | Kennett Public Schools          | Southern Boone County School District | MO DESE                            |
| Buder Elementary              | KIPP St. Louis Public Schools   | St. Joseph School District            | MO DMHS                            |
| Camdenton R-III               | Kirkville R-III                 | Valley R-VI                           | MO State Board of Nursing          |
| City Garden Montessori School | Kirkwood School District        | Webster Groves                        | MU Extension                       |
| Confluence Academy            |                                 | Wentzville School District            | New Mexico Alliance for SBHC       |
|                               |                                 |                                       | Washington University in St. Louis |

# Overview for Today's Session

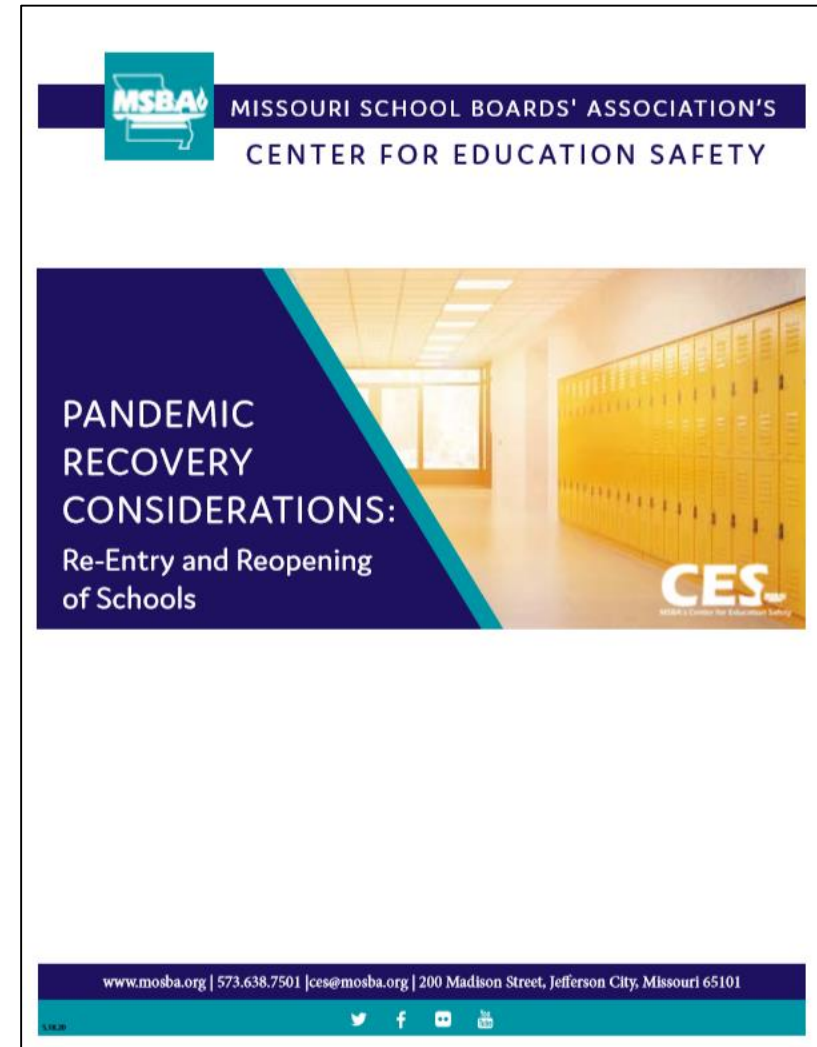
- SBH program re-opening guidance
- Listening & learning discussion
  - **School & SBH Program Re-Entry Planning**
    - Dr. David Campbell, President & CEO, iFM Community Medicine
    - Annette Campbell, RN, BSN, MPA, Director of Score 1 for Health, Kansas City University
- Resources
- Q&A



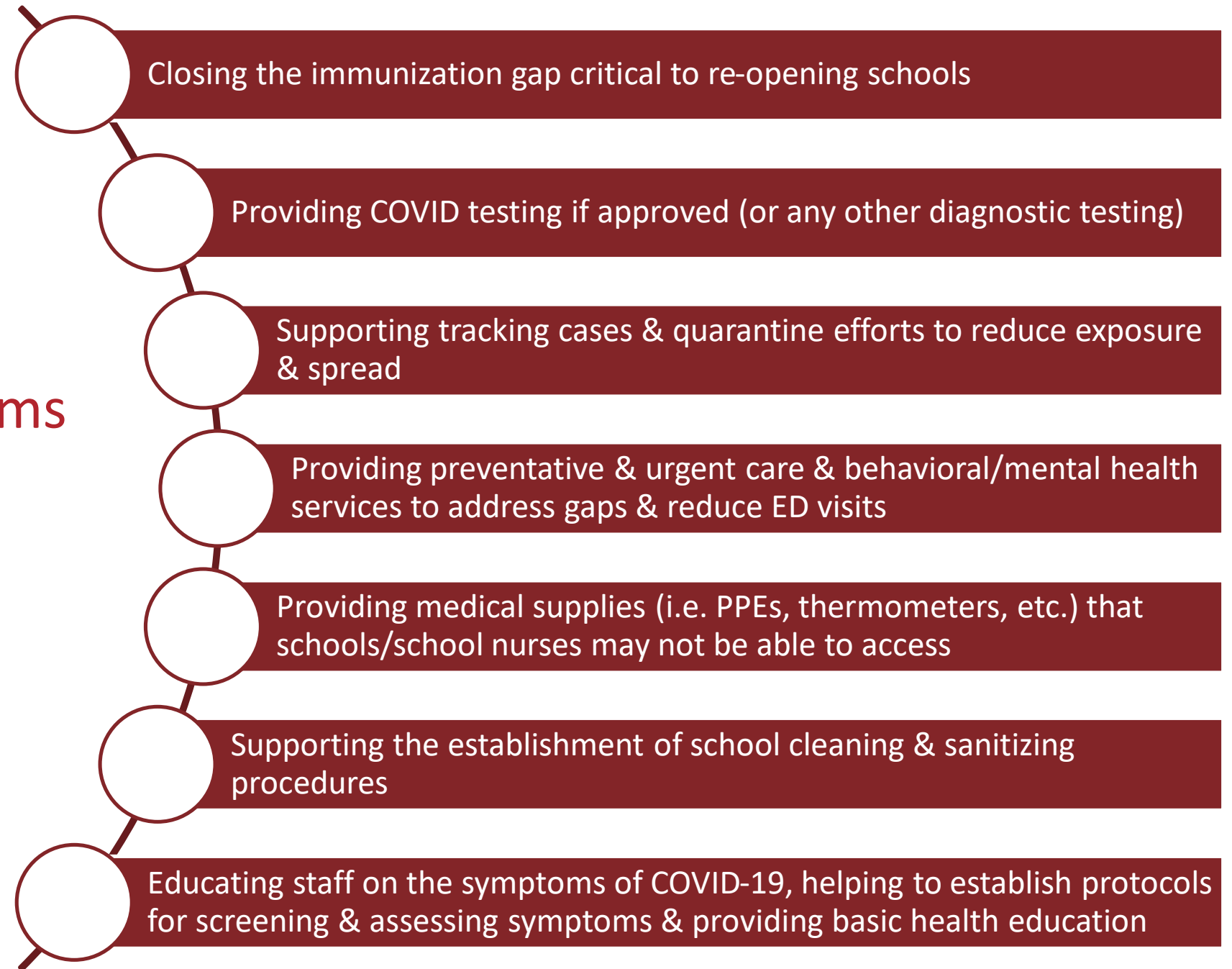
## School Re-Entry Guidance\*

- Centers for Disease Control & Prevention [Interim Guidance for Schools & Child Care](#)
- American Academy of Pediatrics [COVID-19 Planning Considerations](#)

\*Template to guide local discussion; NOT a one size, fits all document. Protocols will change as local conditions change.



## Role of SBH Programs to Support School Re-Entry



# Preliminary Guidance for SBH Programs Throughout School Re-Entry

- **Support & Collaboration with School District Partners**
  - Collaborate early and often on re-entry planning—both for school re-entry planning and for decisions related to SBH program operations.
  - Determine health priorities—immunization gap, mental health needs, etc.
  - Determine how the SBH program will support suspected COVID-19 cases, screening efforts, and isolation requirements.
  - Partner to prepare for students in crisis and who have experienced grief & trauma.



# Preliminary Guidance for SBH Programs Throughout School Re-Entry

- **Operations & Physical Space**
  - Create and/or adapt protocols for COVID-19 screening.
  - Develop plan for social distancing of students & staff.
  - Determine if program will be testing for COVID-19 or referring to a testing site.
  - Understand HIPAA/FERPA and privacy/confidentiality related to COVID-19 reporting, tracking, isolation, risk reduction, etc.
  - Evaluate the role of telemedicine in your program.

# Preliminary Guidance for SBH Programs Throughout School Re-Entry

- Infection Control
  - Develop or adapt written protocol for disinfecting the program space using EPA-approved cleaning products.
  - Procure adequate PPEs.
  - Update protocols to address asthma exacerbation without the use of a nebulizer.
  - Promote prevention of infection, including handwashing.

# Preliminary Guidance for SBH Programs Throughout School Re-Entry

- **Addressing Student Needs**
  - Develop screening procedures & referral resources for social determinants of health.
  - Heighten efforts to collect signed parent consent forms.
  - Communicate with school district to parents about services offered and measures taken to assure infection control.
- **Community Partnerships**
  - Partner with local health authorities & other community/regional efforts.
  - Collaborate with school social workers to create referral resources.

## Discussion

- Dr. David Campbell, President & CEO, iFM Community Medicine
- Annette Campbell, RN, BSN, MPA, Director of Score 1 for Health, Kansas City University
- How has your organization or school district partnered for re-entry planning thus far?
- What are you anticipating your largest challenge to be?
- How are you planning for the unknown at this point?

## Additional Resources

- [Student Privacy During the COVID-19 Pandemic](#) from School Superintendents Association
- [Guidance for Cleaning & Disinfecting](#) from CDC
- [Approved Disinfectants for Use Against COVID-19](#) from EPA
- [Posters – Cover Your Cough and Handwashing](#) from MODHSS

## **Next Listening & Learning Session on Social Determinants of Health**

Friday, June 5<sup>th</sup>

9:00 AM to 10:00 AM

Register at [moschoolhealth.org/news-events](https://moschoolhealth.org/news-events)

Complete [our evaluation here](#) to inform future topics.



## National School-Based Health Alliance

[w] [www.sbh4all.org](http://www.sbh4all.org)

## Show-Me School-Based Health Alliance of MO

[w] [www.moschoolhealth.org](http://www.moschoolhealth.org)

[p] 800-807-8494

[e] [info@MOschoolhealth.org](mailto:info@MOschoolhealth.org)

[s] @MOSchoolHealth

[Twitter](#) | [Facebook](#) | [LinkedIn](#)

## Resources

### SMSBHA Staff

Molly Ticknor, Executive Director

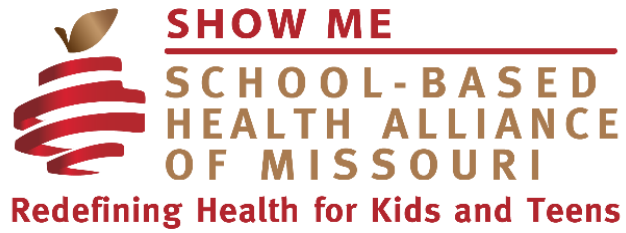
[e] [mticknor@moschoolhealth.org](mailto:mticknor@moschoolhealth.org)

Molly Imming, Training & TA Manager

[e] [mimming@moschoolhealth.org](mailto:mimming@moschoolhealth.org)

Rachel Barth, Evaluation Coordinator

[e] [rbarth@wustl.edu](mailto:rbarth@wustl.edu)



Thank you to those whose financial and in-kind contributions support our efforts!



# Interco Charitable Trust



*a catalyst for change*

Missouri Foundation for Health



MISSOURI SCHOOL BOARDS' ASSOCIATION

