

Listening & Learning Session

Friday, May 8, 2020

Overview for Today's Session

- Introductions
 - Show-Me School-Based Health Alliance of Missouri
 - Today's attendees
- Update on school re-entry resources
- Listening & learning discussion
 - **Mental health & well-being – resources and strategies**
 - **Amanda Arnold, RN, BSN**, Chief Clinical & Risk Officer, Health Care Collaborative of Rural Missouri/Live Well Community Health Centers
 - **Amy Hill, LCSW**, System Director, School Based Services, Burrell Behavioral Health
- Resources & closing

Show-Me School-Based Health Alliance of MO

Mission: We support communities in building and sustaining quality school-based health programs.



Access to Resources & Best Practices

Peer-to-Peer Networking Across MO Programs



Target Audience

School districts, community stakeholders, and the healthcare providers that serve them.



Advocacy & Coalition Building

Technical Assistance



Data Collection & Evaluation

Training & Education



Missouri SBH Program Type Definitions

THE BIG SIX

The Show-Me School-Based Health Alliance has expanded the types of school-based health programs to represent the six types of programs that exist in districts throughout Missouri.



① Comprehensive School-Based Health Center

Comprehensive School-Based Health Centers are a partnership between schools and community health organizations that deliver primary health care, behavioral/mental health care, oral care, and vision care coordinated by the center—even if they are delivered by different providers.

② School-Based Health Center

School-Based Health Center (SBHC) programs are partnerships between schools and community health organizations that deliver primary health care, at minimum, through a fixed site on a school campus.

③ School-Linked Health Care

School-Linked Health Care programs are linked with schools to coordinate and provide health care for students. Services are delivered off campus through a fixed site near the school.

④ School-Based Mental Health Program

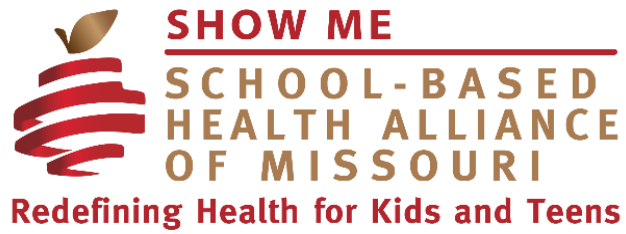
School-based mental health programs are partnerships similar to SBHCs but only provide behavioral/mental health.

⑤ Mobile Health Care

Mobile Health Care programs are without a fixed site that rotate a health care team through a number of schools, including mobile van/bus/clinic on wheels that parks on or near school property/campus.

⑥ Telehealth

Telehealth programs deliver 100% of school-based health care services using telemedicine technology.



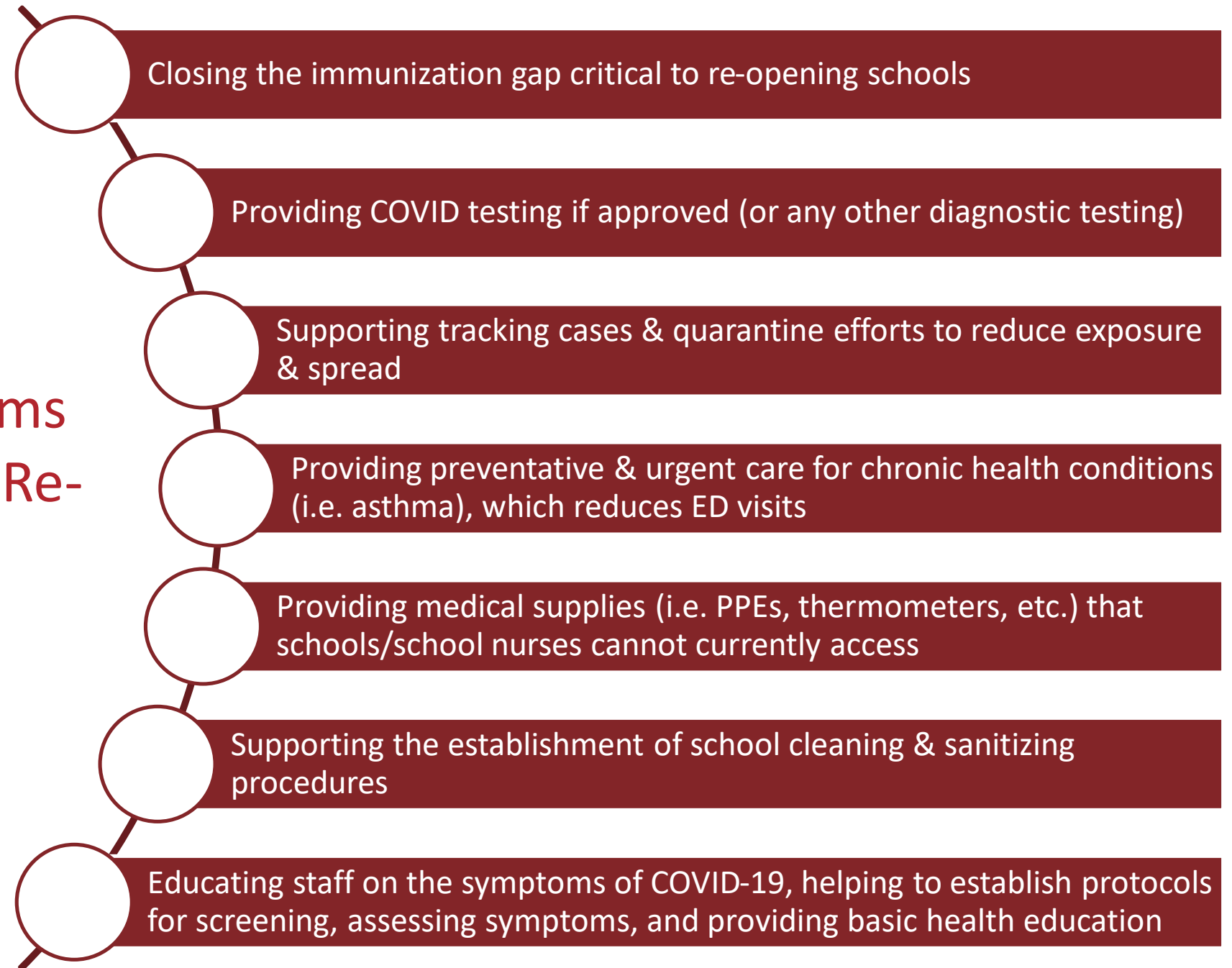
Welcome!

- | | | | |
|---|---------------------------------|----------------------------------|------------------------------------|
| BJC Healthcare | Ozarks Community Health Center | Mexico Public Schools | Cigna |
| Burrell Behavioral Health | ReDiscover | NC School | GlaxoSmithKline |
| Central Ozarks Medical Center | Samuel U. Rodgers Health Center | Nixa Schools | KCU |
| Children's Mercy Hospital | Affton School District | Northwest R-1 | Kansas City Health Department |
| Citizen's Memorial Hospital | Belton School District | Owensville High School | Jewish Family Services |
| Clarity Healthcare | Buder Elementary | Raymore Peculiar School District | Missouri Care |
| Complete Family Medicine | Carl Junction School District | Richmond School District | Missouri Foundation for Health |
| Comtrea | Columbia Public Schools | Ritenour School District | Missouri Parents as Teachers |
| FCC Behavioral Health | Green City R-1 Schools | Riverview Gardens | MO DHSS |
| Health Care Collaborative of Rural Missouri | Hazelwood School District | Rockwood School District | MO State Board of Nursing |
| Heartland Behavioral Health | KIPP St. Louis Public Schools | Salem School District | MU Extension |
| Missouri Highlands | Kirksville R-III | UMSL Charter Schools | St. Louis Psychoanalytic Institute |
| Missouri Ozarks Community Health | Kirkwood School District | Waynesville R-VI | UHC |
| | Lee's Summit R-7 | Wentzville School District | Washington University in St. Louis |
| | | Wright City School District | |

Re-Entry and Reopening Guidedance

- MSBA's Center for Education Safety [Pandemic Recovery Considerations: Re-entry and Reopening of Schools](#)
- National Association of School Nurses [Interim Guidance: Role of School Nurse in Return to School Planning](#)
- American Academy of Pediatrics [COVID-19 Planning Considerations: Return to In-person Education in Schools](#)
- Please email us at info@moschoolhealth.org your outstanding questions to prepare for our May 22nd Listening & Learning Session focused on re-entry.

Role of SBH Programs Throughout School Re- Entry



Mental Health & Well-Being

- Amanda Arnold, RN, BSN, Chief Clinical & Risk Officer
 - Health Care Collaborative of Rural Missouri/Live Well Community Health Centers
- Amy Hill, LCSW, System Director, School Based Services
 - Burrell Behavioral Health

Discussion

- What challenges do you have related to mental health?
- What concerns do you have related to mental health?
- What resources or strategies have you found helpful for supporting student mental health? For supporting caretakers or your own mental health?
- How have you adjusted your mental health efforts to meet the needs of students/families now? What changes are you planning for as we plan for re-entry?

Mental Health Resources

Articles

- [Helping Students Through Pandemic Grief and Trauma from SLJ](#)
- [Coronavirus Disease 2019 \(COVID-19\) and Mental Health for Children and Adolescents](#)

Toolkits & Resources

- [COVID-19 Resources from National Center for Youth Mental Health](#)
- [MSBA's Resources for the COVID-19 Pandemic](#)
- [MOSHBA's COVID-19 Resources](#)

Mental Health Upcoming Webinars

Suicide Prevention, Intervention, and Postvention During COVID-19: What School-Based Staff Need to Know by the National School- Based Health Alliance

- Tuesday, May 12, 2020 from 1:00 pm to 2:00 pm (CST)
- [Register here to attend!](#)

Practicing Self-Care: Building Resilience to Combat Burnout & Secondary Traumatic Stress presented by the Kansas City Suicide Awareness & Prevention Program

- Tuesday, May 19, 2020 from 12:00 pm to 1:00 pm
- [Register here for Zoom webinar!](#)

Resources from MU Extension

- [Youth Mental Health First Aid](#)—available to schools at no cost through partnership with the MSBA
- [Taking Care of YOU: Body, Mind, Spirit](#)—available online at no cost
- Also [Tips for Co-Parenting During COVID-19](#) & upcoming [Childcare Training](#) on May 12th & 14th
- Contact Amy Bartels at bartelsa@Missouri.edu for more information



Next Listening & Learning Session on School Re-entry Planning

Friday, May 22nd

9:00 AM to 10:00 AM

Register at moschoolhealth.org/news-events

Complete our [evaluation of today's session](#) to inform future topics.

Resources

National School-Based Health Alliance

[w] www.sbh4all.org

Show-Me School-Based Health Alliance of MO

[w] www.moschoolhealth.org

[p] 800-807-8494

[e] info@MOschoolhealth.org

[s] @MOSchoolHealth

[Twitter](#) | [Facebook](#) | [LinkedIn](#)

SMSBHA Staff

Molly Ticknor, Executive Director

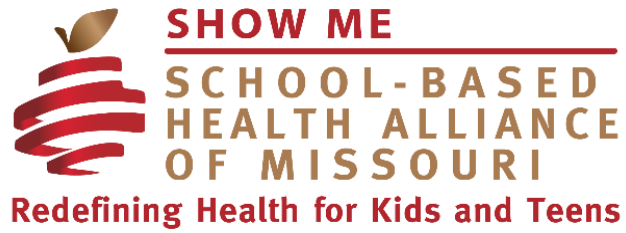
[e] mticknor@moschoolhealth.org

Molly Imming, Training & TA Manager

[e] mimming@moschoolhealth.org

Rachel Barth, Evaluation Coordinator

[e] rbarth@wustl.edu



Thank you to those whose financial and in-kind contributions support our efforts!



Interco Charitable Trust



a catalyst for change

Missouri Foundation for Health



MISSOURI SCHOOL BOARDS' ASSOCIATION

